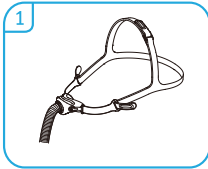




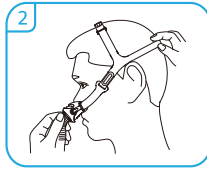
Mask Fitting Guide

N6 Nasal Mask

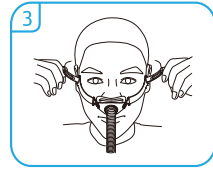
Fitting your Mask



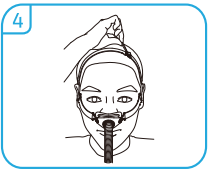
Attach the headgear to the mask frame



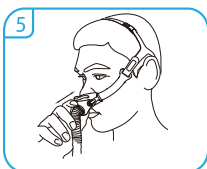
Place mask cushion under nose; Pull headgear over head



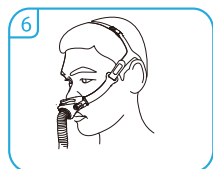
Repeat adjustment for lower straps



Fine-tune top straps

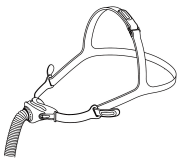


Briefly pull mask from nose; Replace to fit cushion comfortably

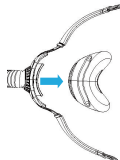


Simply fit to a comfortable seal; Don't over-tighten.

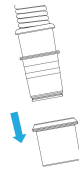
Disassembling the Mask



Undo and remove the lower headgear straps out of the hole on the frame.

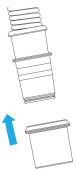


Remove the cushion from the frame assembly.

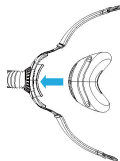


Remove the swivel from the Frame assembly.

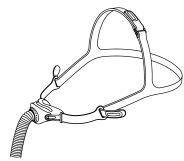
Reassembling the Mask



Install the Swivel onto the frame assembly and confirm that the swivel is reliable.



Install the Cushion assembly onto the frame assembly and confirm that the Cushion assembly is reliable.



Install the lower headgear onto the installation hole of the frame assembly.



Cleaning Guide

N6 Nasal Mask



Daily Care



Step 1

The components should be soaked in a mild liquid detergent solution (as dishwashing liquid) with drinking-quality water (25°C to 35°C) for 10 minutes.



Step 2

Please gently clean with a soft-bristled brush, paying particular attention to crevices and cavities.



Step 3

Rinse the components thoroughly with clean water.



Step 4

Ensure the components be air-dried in a location that is not exposed to direct sunlight.

Weekly Care



Step 1

The headgear should be hand washed in a mild detergent solution (as dishwashing liquid) for 10 minutes.



Step 2

Ensure thorough rinsing and allow for complete air-drying, avoiding direct sunlight.