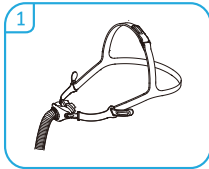




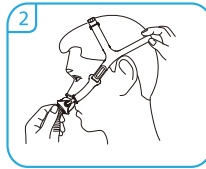
# Mask Fitting Guide

## P6 Nasal Pillows Interface

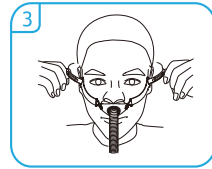
### Fitting your Mask



1 Attach the headgear to the mask frame



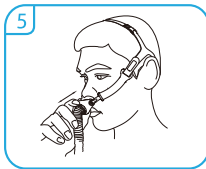
2 Place mask cushion under nose; Pull headgear over head



3 Repeat adjustment for lower straps



4 Fine-tune top straps

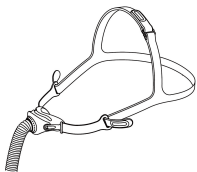


5 Briefly pull mask from nose; Replace to fit cushion comfortably

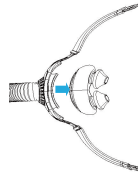


6 Simply fit to a comfortable seal; Don't over-tighten.

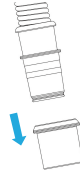
### Disassembling the Mask



Undo and remove the lower headgear straps out of the hole on the frame.

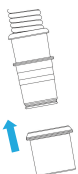


Remove the cushion from the frame assembly.

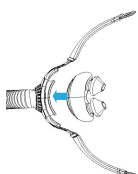


Remove the swivel from the frame assembly.

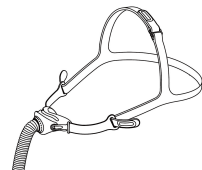
### Reassembling the Mask



Install the swivel onto the frame assembly and confirm that the swivel is reliable.



Install the cushion assembly onto the frame assembly and confirm that the cushion assembly is reliable.



Install the lower headgear onto the installation hole of the frame assembly.



# Cleaning Guide

## P6 Nasal Pillows Interface



### Daily Care



**Step 1**

The components should be soaked in a mild liquid detergent solution (as dishwashing liquid) with drinking-quality water (25°C to 35°C) for 10 minutes.



**Step 2**

Please gently clean with a soft-bristled brush, paying particular attention to crevices and cavities.



**Step 3**

Rinse the components thoroughly with clean water.



**Step 4**

Ensure the components be air-dried in a location that is not exposed to direct sunlight.

### Weekly Care



**Step 1**

The headgear should be hand washed in a mild detergent solution (as dishwashing liquid) for 10 minutes.



**Step 2**

Ensure thorough rinsing and allow for complete air-drying, avoiding direct sunlight.